



PORTWAY
JUNIOR SCHOOL

Start the Year Meeting
Year 5
2023/2024

Meet the Team

Otter Class

Mrs Brewer

Class teacher & Year 5 Leader

Mrs Raithby

Teaching Assistant



Finch Class

Miss Morrison

Class teacher

Mrs Wernham

Teaching Assistant



Mr Pearmain

Forest School Teacher & Finch Class
teacher on Fridays

Raven Class

Mr Ireland

Class teacher

Mrs Lang

Teaching Assistant & HLTA



Expectations

Portway Code

Ready. Respectful. Safe.

Portway Values

Positivity

Resilience

Integrity

Dedication

Encouragement





THE PORTWAY CODE

READY

RESPECTFUL

SAFE

POSITIVITY RESILIENCE INTEGRITY DEDICATION ENCOURAGEMENT



THE PORTWAY CODE: REWARDS

Housepoints

Phone Call Home

Portway Positive Postcard

POSITIVITY RESILIENCE INTEGRITY DEDICATION ENCOURAGEMENT



THE PORTWAY CODE: SANCTIONS

Reminder

2nd Reminder

Last Chance

Reparation

POSITIVITY RESILIENCE INTEGRITY DEDICATION ENCOURAGEMENT



▶▶• Key Information

Drop off 08:40 – *please note any children in school before 08:40 will be asked to go to Breakfast Club*

Breakfast Club & Portway Plus

Clubs (information will be released soon)

Portway Press

Paying online (Scopay)



Mobile Phones

Having a mobile phone in school is discouraged.

Children may bring a phone if needed but they must not be used in the school grounds.

Children to hand their phone to their teacher (switched off - not just on silent) on arrival and collect at the end of the day.

Age Restrictions for Social Media Platforms

What is the minimum age for account holders on these social media sites and apps?

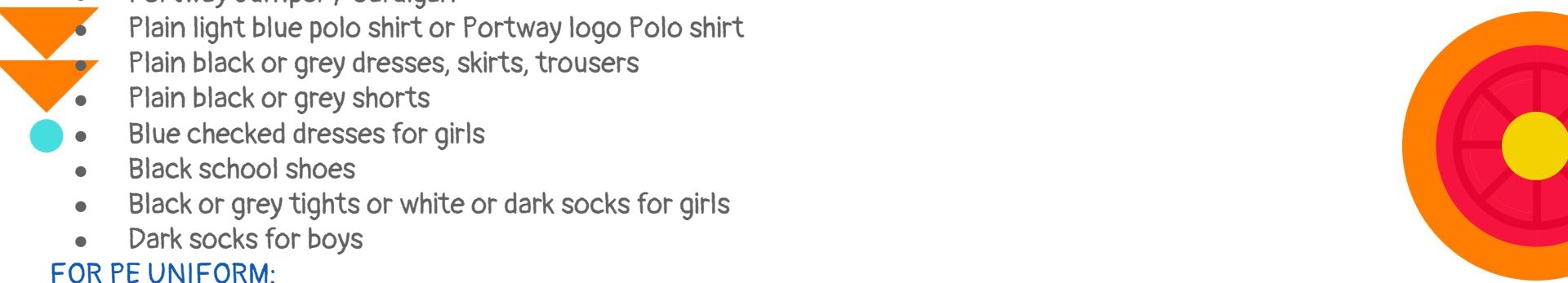





Uniform

Uniform is worn at Portway Junior School to develop a sense of pride, identity and belonging in being a member of the school community. We believe that looking smart will help us to feel pride in who we are as a part of the Portway family and to take pride in all we do.

FOR SCHOOL UNIFORM:

- 
- Portway Jumper / Cardigan
 - Plain light blue polo shirt or Portway logo Polo shirt
 - Plain black or grey dresses, skirts, trousers
 - Plain black or grey shorts
 - Blue checked dresses for girls
 - Black school shoes
 - Black or grey tights or white or dark socks for girls
 - Dark socks for boys

FOR PE UNIFORM:

- 
- Light Blue T-shirt.
 - Plain royal blue or black shorts
 - Plain blue or black tracksuit
 - Plain black or white trainers (for sports not fashion)



Other

COATS AND BAGS:

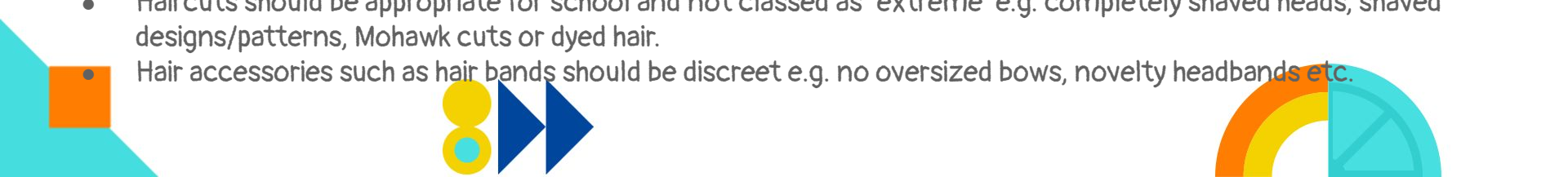
- Children should be encouraged to make sensible choices on what they wear depending on the weather. Plain coats should be worn and wellies may be worn in extremely bad weather; these must be changed into school shoes when in school.
- Your child may bring in a small rucksack/school bag - they should be clearly named. These will need to fit into your child's locker during the day.



JEWELLERY:

- No jewellery to be worn due to health and safety reasons.
- Small plain studs in pierced ears, small watches (excluding smart watches) and small objects of religious significance are allowed.
- For safety reasons, the county stipulates that the wearing of earrings during PE lessons is forbidden.
- If a child cannot remove an earring it must be covered - please provide your child with tape.
- Medical bracelets and medical necklaces are exempt from these rules.

MAKEUP AND HAIR:

- Make up (including nail varnish) is not permitted to be worn in school.
 - Haircuts should be appropriate for school and not classed as 'extreme' e.g. completely shaved heads, shaved designs/patterns, Mohawk cuts or dyed hair.
 - Hair accessories such as hair bands should be discreet e.g. no oversized bows, novelty headbands etc.
- 



PE & Forest School

PE

Indoor - Wednesdays

Outdoor - Fridays

This half term we have swimming on Wednesdays so PE kit will only need to be worn on Fridays.

Swimming - A googleform has been sent out - please make sure it is filled in. Children will need swim shorts / costume (no bikinis), a towel and goggles.

Forest School


Thursday (every 3 weeks)

Finch - 7th Sep, 28th Sep & 19th Oct, 16th Nov, 7th Dec

Otter - 14th Sep, 5th Oct & 2nd Nov, 23rd Nov, 14th Dec

Raven - 21st Sep, 12th Oct & 9th Nov, 30th Nov,

Children need: Wellies or spare shoes/trainers, coats, spare socks, long trousers, long sleeves.



▶▶• Year 5 Curriculum

KB

Autumn 1

<u>English</u>	<u>Maths</u>	<u>Science</u>	<u>French</u>	<u>Geography</u>	<u>Art</u>	<u>PE</u>	<u>Computing</u>	<u>RE</u>	<u>Music</u>	<u>PSHE</u>
Reading / Writing George's Secret Key to the Universe	Place Value Arithmetic	How light behaves	Je me presente This is me Language Angels	Chocolate and Trade	Van Gogh Study	Swimming and Hockey	Digital Literacy	Stewardship - Creation	Our Community Collins Music Express	Being me in my world



Homework

- Times tables (at least 4 times a week)
- Reading (at least 4 times a week)
- Signed by a parent (on Thursday night)

Please ensure that this is recorded in your children's diaries.

Children will be expected to hand their diaries in on a Friday to be checked by a member of staff.



▶▶ Homework

Half Termly homework, set at the start of term for children to complete when they can. There will be a grid with options to choose from (these will be available next week).

Children can earn a range of house points depending how big the project is they choose to do.

They are encouraged to do a minimum of 3 pieces over the half term.

Available on Google Classroom.

Speak to class teacher for alternative arrangements if you struggle with access to ICT.



▶▶ Reading at Portway

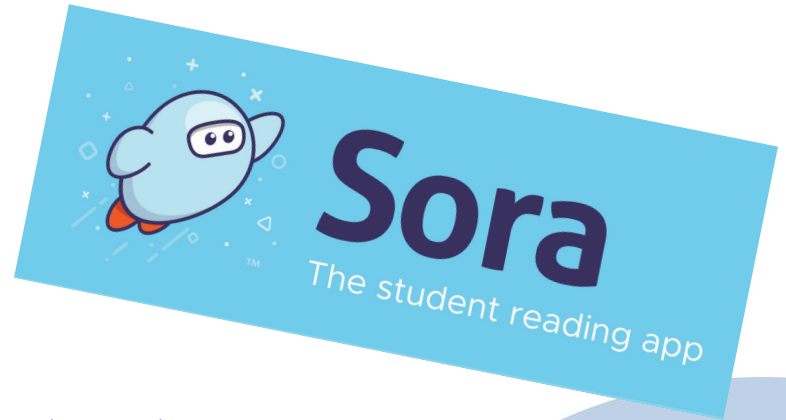
SORA app

Search, add Portway Junior School and child's e-mail address.

Lots of online books, audio books and magazines too!



Book Bingo is our Free Reading scheme. It is a reading scheme that we have developed to encourage children to read, understand and enjoy a wide range of suitably challenging books.



Children should read either their Project X or Big Cat book or Book Bingo book at home and in school. Books from the list have been selected as high-quality texts which link to year group topics. We hold all of the titles in school for children to borrow.

▶▶ Spelling at Portway

Our approach to spelling is using:

No Nonsense Spelling

We will dedicate time to the teaching of spelling in school - it will be taught 2 or 3 times every week.

Children will learn statutory words and be taught a wide range of spelling rules using a range of creative approaches.



▶▶ Spelling at Portway

There will be **no weekly spelling test**. Your child will not bring a list of words home. Instead, low stakes assessment is embedded within regular lessons. You can support your child with spelling at home by talking about spelling rules, finding words that match spelling patterns and playing spelling games. There will be a weekly update on Google Classroom to let you know which spelling rules have been covered that week.



▶▶ Maths at Portway

DI



We use the CPA (concrete, pictorial approach) for teaching and learning.

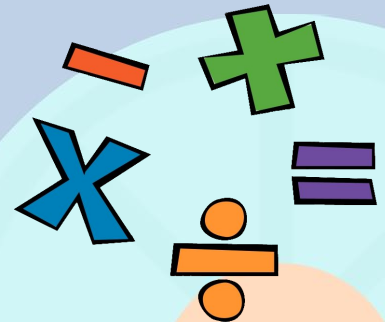
https://docs.google.com/document/d/1h0hC8vynnLA-7yNjqcSkDiwiI07Yt8mcVq_KQvjA5J4/edit

We follow the White Rose scheme.

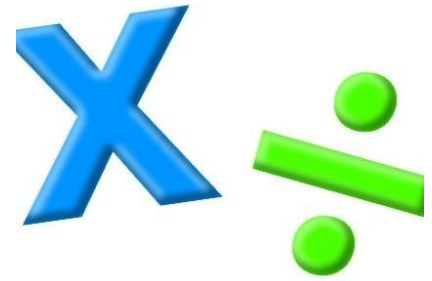
https://docs.google.com/document/d/1daPRrZ4g2aghDIVIDp5eDD4zxpNG_RhGdD_S97wEdDU/edit

The children complete a range of fluency, reasoning and problem solving tasks in their day-to-day lessons.

<https://docs.google.com/document/d/11SUuXtgwqucGXNmTXPdaKYmUFqxB5ZzkfqpB3S1mvOg/edit>



▶▶ Times Tables



At Portway, we want to really engage the children so they enjoy and are excited to learn their tables. It is so beneficial to the children's maths if they are confident with finding multiplication and division number facts.

Children are able to practice using web games such as Times Table Rockstar and on Education City.

(We use Times Table Rockstars and Education City - your child's login is their email address and their password is the same for each online learning platform.)



▶▶ PSHE at Portway



We use Jigsaw as our PSHE scheme at Portway.

Autumn 1

Autumn 2

Spring 1

Spring 1

Summer 1

Summer 2



Being Me in My World



Celebrating Difference



Dreams & Goals



Healthy Me



Relationships



Changing Me



Portway Junior School

▶▶• Key Information

Lockers

Pencil cases & bags

Water bottles

Snacks & lunches (no nuts. No snacks provided)





Key Dates

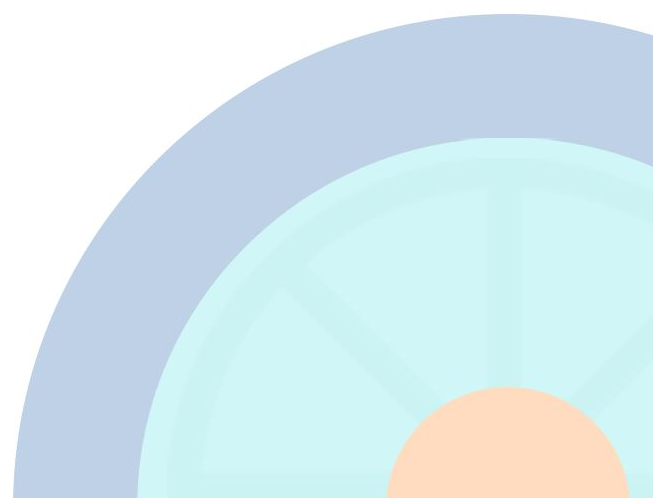
Friday 20th October - Break up for half term

Monday 30th October - Back to school after half term

Monday 6th November - INSET Day

Monday 13th November - Individual photographs

Friday 15th December - Break up for Christmas holiday





Any Questions...

Just Ask!



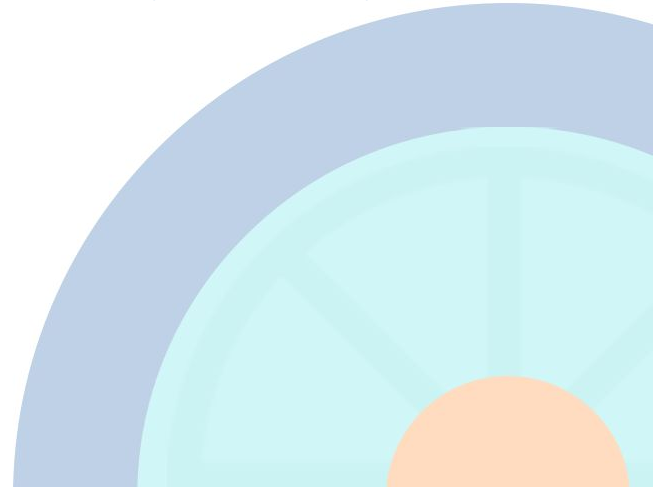
Cuppa & Chat

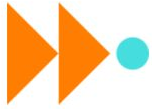
Thursday 21st September

Drop children off and then come
to the hall - 8:45 - 10:00 am



Portway Junior School





PORTWAY
JUNIOR SCHOOL



Thank you